



Sasquatch Resources (CSE: SASQ) – Mount Sicker Reclamation Project



SUMMARY

- Mount Sicker was the site of historical mining between mainly 1895-1915
- 300,000 tons of acid-generating waste rock and a number of other hazards were left behind
- A no chemical, closed-loop ore sorting process would remove over 95% of sulphides from the rock, including gold, copper, silver and zinc, but also mercury, arsenic, lead and sulphur
- No new “mining” would be done, hazards would be addressed, and the site would finally return to nature after over 100 years
- Removed high-sulphide material can be sold and the economics are potentially very attractive
- There are two more waste rock projects held by Sasquatch, Blue Grouse and Santana, both near Mount Sicker



Previous operations on Mount Sicker include **Lenora**, **Richard III**, **Tyee**, **Victoria** and **Twin J** mines (1895-1945)

All work has left behind **massive** amounts of waste

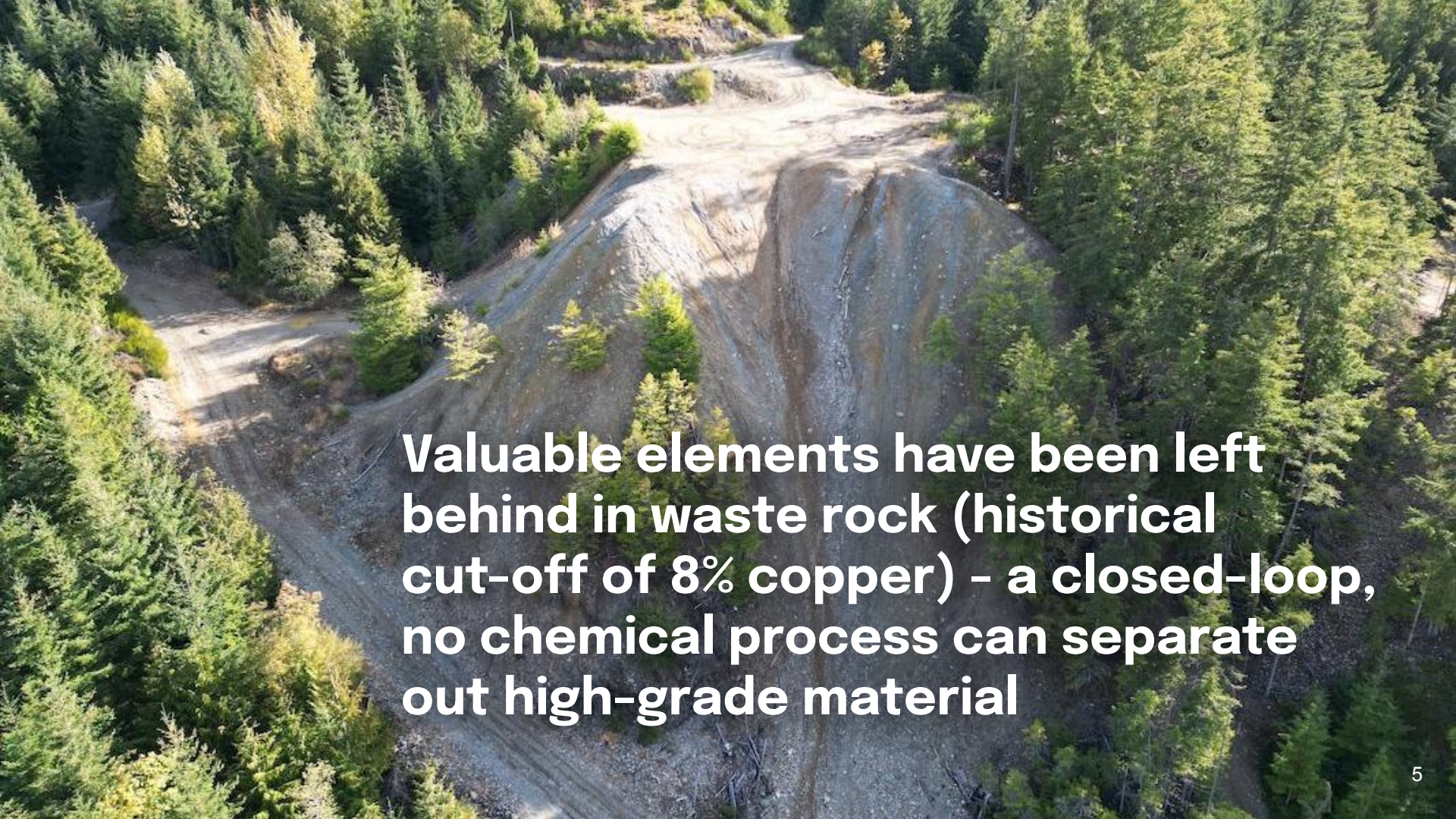


Up to 500,000 tonnes of waste rock may be sitting at the old mining sites on Mount Sicker






Waste rock areas on Mount Sicker have remained unchanged for over 100 years, becoming a magnet for local garbage dumping

An aerial photograph showing a large, conical pile of waste rock in a forested area. The rock pile is light-colored and has a distinct vertical crease down its center. It is surrounded by dense green trees. A dirt road or path is visible on the left side of the rock pile, and another path leads up the hillside in the background. The overall scene is a mix of natural forest and industrial waste.

Valuable elements have been left behind in waste rock (historical cut-off of 8% copper) - a closed-loop, no chemical process can separate out high-grade material



There would be a professionally designed and approved reclamation/closure strategy, restoring the site and addressing a number of existing hazards



DANGERS ON MOUNT SICKER

Historic mining operations have left behind old workings and a number of potentially life-threatening hazards

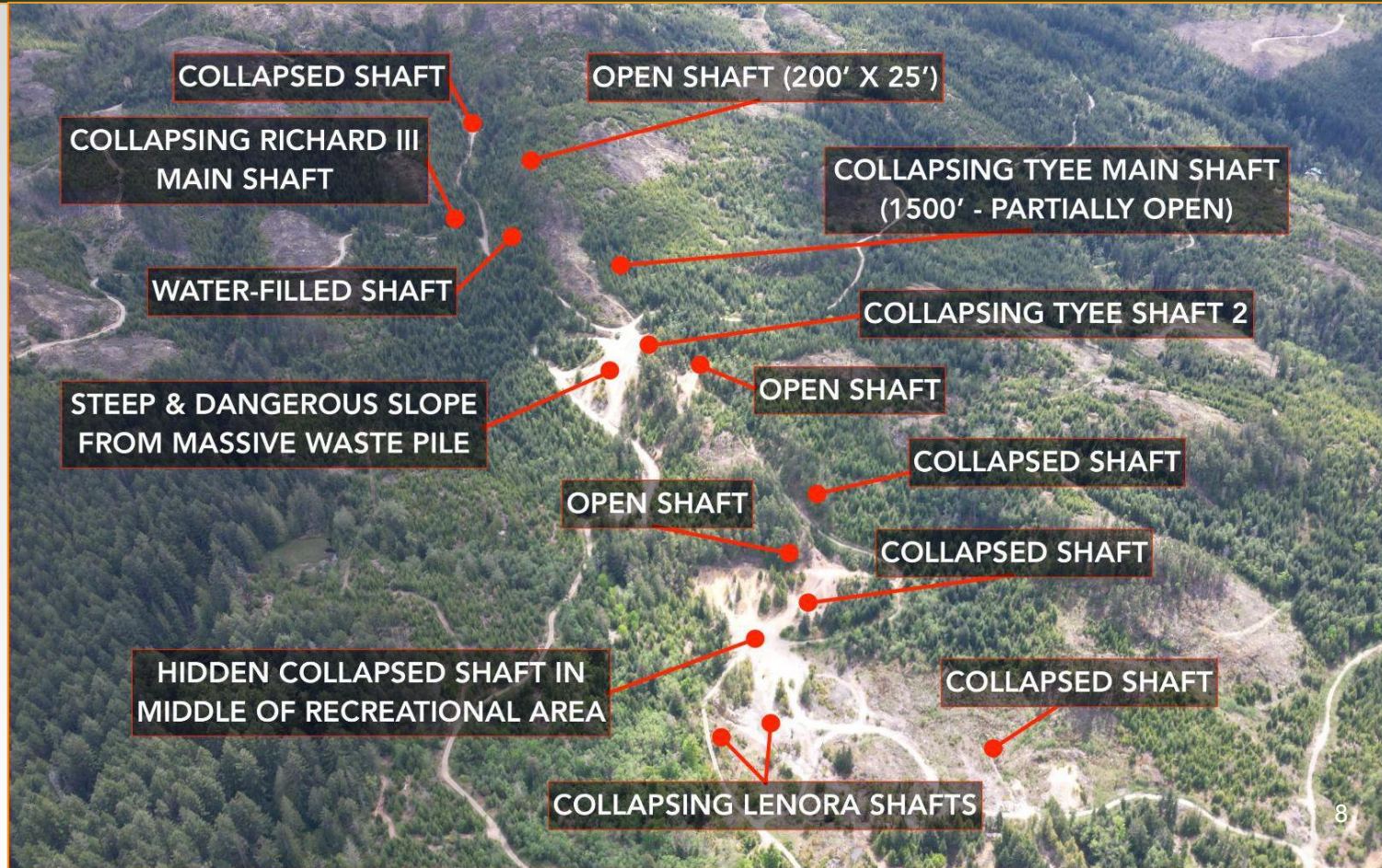
The area is used extensively by locals and tourists for mountain biking, dirt biking, hiking, and other recreational activities

As a part of any reclamation plan, known hazards would be addressed





SAMPLING OF MOUNT SICKER HAZARDS





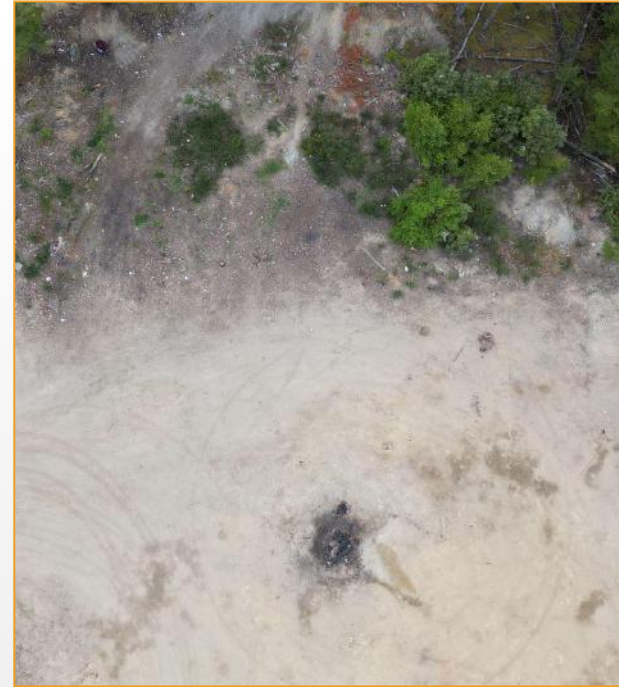
HAZARD CLOSE UPS



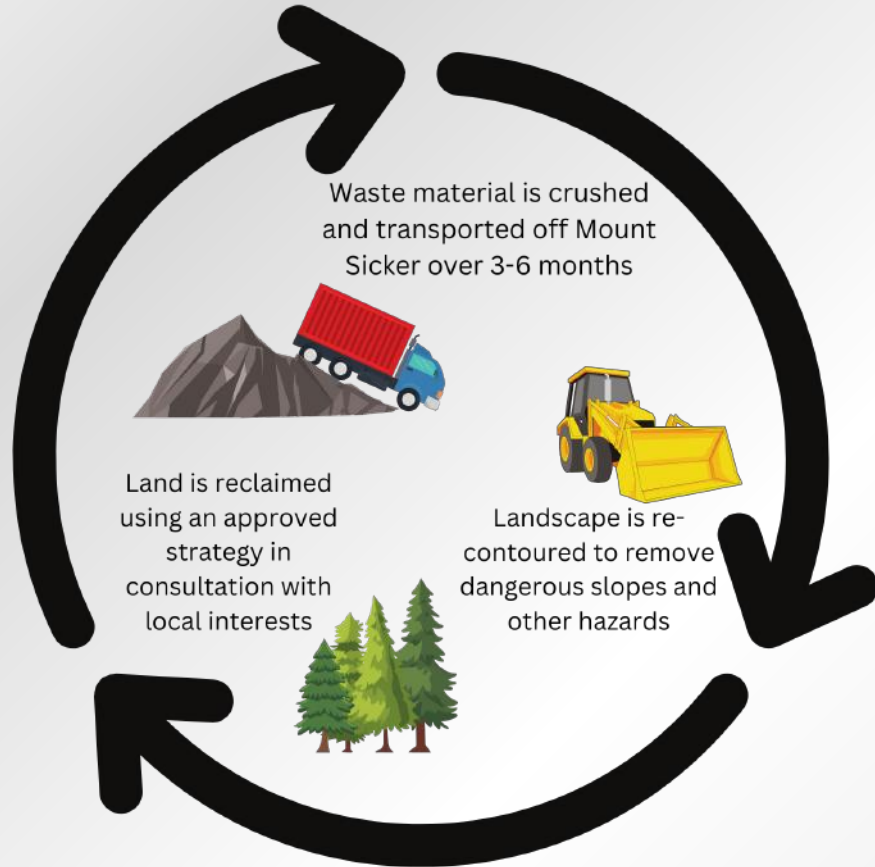
Open shaft hidden by trees, 25ft across and over 200 ft deep



Open adits all over the area - to be sealed with special screens*



Collapsed potholes in open areas of recreational use





LENORA DUMP - RENDERING

BEFORE

ILLUSTRATION

AFTER



TYEE DUMP - A FEW HUNDRED METERS FROM BEFORE LENORA AFTER





PROCESSING PLAN

- The waste will be crushed and sorted on-site using a mobile system
- High-grade waste and fines will be transported off-site to an advanced processing facility
- The entire process, once started, should be completed within a year





PROCESSING POTENTIAL

- 300,000 tons of waste or more, all in piles at surface and easily accessible
- Grid sampling program at surface found average values of 1.86 g/t gold, 48.6 g/t silver, 1.22% copper, and 3.05% zinc - but overall averages may be higher*
- 528kg ore sorting test-run returned high-grade material with 6.43 g/t gold, 180 g/t silver, 4.92% copper and 8.7% zinc - sorted ore will be sold and shipped off site*
- Overall mass pull from waste is expected to be in the 30-40%, which could produce in the range of 100,000 tons of high-grade material to sell
- High-grade material will be trucked to a nearby port (Crofton, Cowichan Bay, or similar) and shipped to an overseas processing facility - payment occurs on delivery to port



*See Press Releases dated [March 27](#), and [October 9](#), 2024



ACID TESTING

- Testing was performed on Mount Sicker waste before and after being run through the ore sorting process
- Existing waste scored 0.2 neutralization - highly acidic
- Post sorting, remaining waste scored 5.3-6.3, which is “normal”
- PH levels went from 6.3 to 7.2 - again, acidic to normal
- Overall, 95% of contaminants were removed, including lead, arsenic, mercury and sulphur (but also gold, copper, silver and zinc)





PERMITTING PROCESS

- Permitting process is underway
- It is assumed the Province has a vested interest in addressing the waste and hazards
- Sasquatch must submit detailed surveys, processing plans, and a reclamation/closure strategy, all from qualified professionals - which is all in process
- The site is currently a waste dump, with potential ongoing leaching issues and potentially life-threatening physical hazards (including open mine shafts)
- The goal is to remove the high-sulphide (also high-grade mineral) waste, address the hazards, improve water runoff quality, and make the site safe for recreational use
- Community, local government and First Nations have expressed support





Ore sorting and related technology will be provided by Sulphide Radiation Inc. and led by Brent Hilscher, who is considered a global leader in ore sorting technology and has done work for dozens of notable international mining companies, including:

The logo for Goldcorp, featuring a stylized 'G' made of three horizontal bars to the left of the word 'GOLDCORP' in a bold, black, sans-serif font.The logo for Newmont, featuring a yellow triangle to the left of the word 'Newmont' in a blue, sans-serif font, with a trademark symbol.The logo for Rio Tinto, featuring the words 'Rio Tinto' in a large, red, serif font.The logo for Teck, featuring the word 'Teck' in a bold, black, sans-serif font.The logo for Agnico Eagle, featuring a stylized yellow and black eagle head to the left of the words 'AGNICO EAGLE' in a black, sans-serif font.The logo for Kinross, featuring the word 'KINROSS' in a gold, serif font inside a black rectangular box with a gold border.The logo for Wheaton Precious Metals, featuring a stylized 'W' to the left of the words 'WHEATON' and 'PRECIOUS METALS' in a gold, sans-serif font.The logo for Vale, featuring the word 'VALE' in a grey, sans-serif font.The logo for Barrick, featuring the word 'BARRICK' in a blue, serif font.



LOW CAPITAL INVESTMENT REQUIRED TO ACHIEVE CASH-FLOW

- Processing partner SRI to provide technical support and all required ore sorting equipment in exchange for 50% of profits
- Once permitted, first delivery of 10,000 tons of high-grade material to port could occur within weeks
- Significant cash-flow can be achieved with minimal initial capital, some of which could be obtained through grants, debt, or other non-dilutive means





WHY WE THINK THIS APPROACH COULD BE “THE MODEL” GOING FORWARD:

Previous attempts to address waste-rock at old mining sites generally suggest small-scale processing on-site, which has the following issues:

- Requires MORE mining infrastructure, including new tailings ponds, which increases the mess
- Takes many years before ANY reclamation can be done
- Creates new environmental risks

Sorting and shipping of waste rock has the following big advantages:

- All done using mobile infrastructure, with no "new" mess, and uses an existing facility off-site, for advanced processing
- Can be completed quickly, likely within months, so reclamation can begin almost right away
- Still removes the high-sulphide material (which also holds the valuable minerals), improving quality of future water run-off





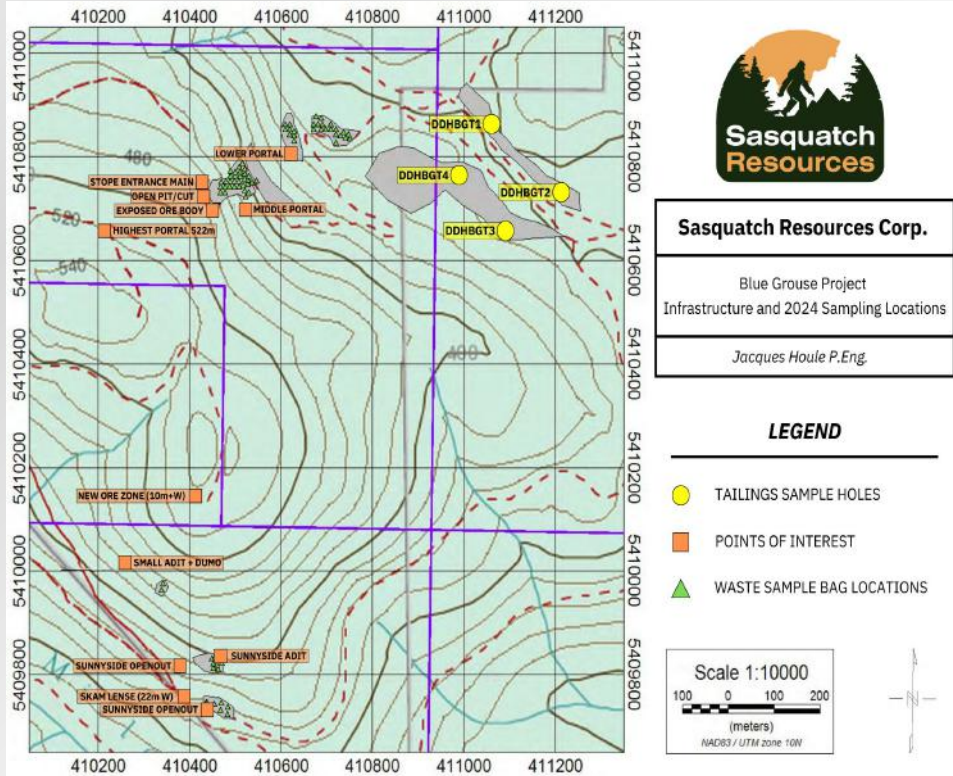
Using an approved reclamation and remediation program, existing hazards will be fixed and the historical mining area will be re-contoured with new soil, trees and foliage brought in to help kick-start the natural revitalization process

Reclaimed areas can be used as "learning zones" for future similar reclamation strategies to be applied elsewhere in BC, Canada and the world





NEXT PROJECTS - BLUE GROUSE



- Sasquatch has secured surface rights to another, nearby project similar to Mount Sicker
- Historical mining at Blue Grouse from the early 1900's has left behind large volumes of high-copper waste, as well as an unclaimed site with a number of physical hazards - all just a few hundred meters from Lake Cowichan which is a recreational hub on Vancouver Island
- A comprehensive sampling program was completed across the waste area, and reported in our November 7, 2024 [Press release](#)



NEXT PROJECTS - SANTANA



- The old Santana mining area is located on Quadra Island, about 2 hours drive north of Mount Sicker
- Mining occurred in and around 1915, with a number of high-sulphide waste piles and other hazards left behind
- High copper, silver and gold remain in the waste and are evident in very large surface outcrops (pictured)
- Some technical details can be found in our April 1 [press release](#)



THE MOUNT SICKER RECLAMATION PROJECT WOULD:

- Provide jobs for the Cowichan Valley
- Clean up a 125-year-old mess
- Result in the recovery of gold, silver, copper and zinc
- Repair a number of potentially life-threatening hazards
- Represent a rare 'win-win' environmentally and economically for the Cowichan Valley
- Serve as an example of how to deal with waste sites nationwide



For more information, please visit sasquatchresources.com



**Thank you for
helping us restore
Mount Sicker to
pristine condition!**





DISCLAIMERS

Confidentiality

This document and all information contained in this document are confidential, proprietary and for the use solely by the prospective investors and their professional advisors. By your acceptance of this document, you agree not to do any of the following in respect of this document or any information contained herein without our prior permission in writing: (1) use; (2) disclose or divulge; (3) copy; (4) retain; (5) reproduce; (6) publish; (7) transmit; (8) make available; or (8) condone, permit or authorize the use, disclosure, copying, retention, reproduction, transmission or publication thereof, including to the public or media. These obligations shall survive indefinitely.

Securities Laws

This document is not, and under no circumstances is to be construed as, a prospectus or an advertisement or a public offering of securities in any province or territory of Canada or elsewhere and does not constitute an offer for the sale of securities. No securities have been or will be qualified for sale to the public under applicable securities laws. No securities regulatory authority in Canada, the United States of America or any other jurisdiction has reviewed or in any way passed upon this document or the merits of any securities and any representation to the contrary is an offence.

Information Provided in this Document

We make no representation or warranty as to the accuracy or completeness of any information included in this document. The information is considered current but will not be updated at any time hereafter. Certain statements in this document are “forward looking statements”. Any statements that express or involve discussions with respect to predictions, expectations, beliefs, plans, projections (financial or otherwise), objectives, assumptions or future events or performance are not statements of historical fact and may be forward-looking statements. Forward-looking statements are based on expectations, estimates and projections at the time the statements are made that involve a number of risks and uncertainties which would cause actual results or events to differ materially from those presently anticipated. These forward-looking statements reflect our current beliefs with respect to future events and are based on information currently available to us. Forward-looking statements involve significant known and unknown risks, uncertainties and assumptions, and many factors could cause actual results, performance or achievements to be materially different from any future results, performance or achievements that may be expressed or implied by such forward-looking statements. You should not place undue reliance on the forward-looking statements. These forward-looking statements are made as of the date of this document and we do not intend to, and we do not assume any obligation to, update or revise these forward-looking statements to reflect new information, events, results or circumstances or otherwise after the date on which such statement is made as to reflect the occurrence of unanticipated events, except as required by law.

Technical Information

The scientific or technical information in this document pertaining to the company’s mineral properties was as disclosed in previous press releases as indicated.