



WASTELAND TO PARKLAND - CREATING VALUE AND RETURNING LEGACY MINE SITES TO NATURE

Investor Presentation | January 2026
sasquatchresources.com



DISCLAIMER

Confidentiality

This document and all information contained in this document are confidential, proprietary and for the use solely by the prospective investors and their professional advisors. By your acceptance of this document, you agree not to do any of the following in respect of this document or any information contained herein without our prior permission in writing: (1) use; (2) disclose or divulge; (3) copy; (4) retain; (5) reproduce; (6) publish; (7) transmit; (8) make available; or (8) condone, permit or authorize the use, disclosure, copying, retention, reproduction, transmission or publication thereof, including to the public or media. These obligations shall survive indefinitely.

Securities Laws

This document is not, and under no circumstances is to be construed as, a prospectus or an advertisement or a public offering of securities in any province or territory of Canada or elsewhere and does not constitute an offer for the sale of securities. No securities have been or will be qualified for sale to the public under applicable securities laws. No securities regulatory authority in Canada, the United States of America or any other jurisdiction has reviewed or in any way passed upon this document or the merits of any securities and any representation to the contrary is an offence.

Information Provided in the Document and Forward Looking Statements

We make no representation or warranty as to the accuracy or completeness of any information included in this document. The information is considered current but will not be updated at any time hereafter. Certain statements in this document are “forward looking statements”. Any statements that express or involve discussions with respect to predictions, expectations, beliefs, plans, projections (financial or otherwise), objectives, assumptions or future events or performance are not statements of historical fact and may be forward-looking statements. Forward-looking statements are based on expectations, estimates and projections at the time the statements are made that involve a number of risks and uncertainties which would cause actual results or events to differ materially from those presently anticipated. These forward-looking statements reflect our current beliefs with respect to future events and are based on information currently available to us. Forward-looking statements involve significant known and unknown risks, uncertainties and assumptions, and many factors could cause actual results, performance or achievements to be materially different from any future results, performance or achievements that may be expressed or implied by such forward-looking statements. You should not place undue reliance on the forward-looking statements. These forward-looking statements are made as of the date of this document and we do not intend to, and we do not assume any obligation to, update or revise these forward-looking statements to reflect new information, events, results or circumstances or otherwise after the date on which such statement is made as to reflect the occurrence of unanticipated events, except as required by law.

Technical Information

The scientific or technical information in this document pertaining to the company’s mineral properties was as disclosed in previous press releases as indicated.



EXTRACTING HIGH VALUE WASTE ROCK, REHABILITATING HISTORIC MINE SITES

The Opportunity

- Sasquatch has acquired legacy mines from the early 1900's with waste piles containing copper, gold, silver and/or zinc.
- The sites were never closed properly and are environmentally hazardous.

The Goal

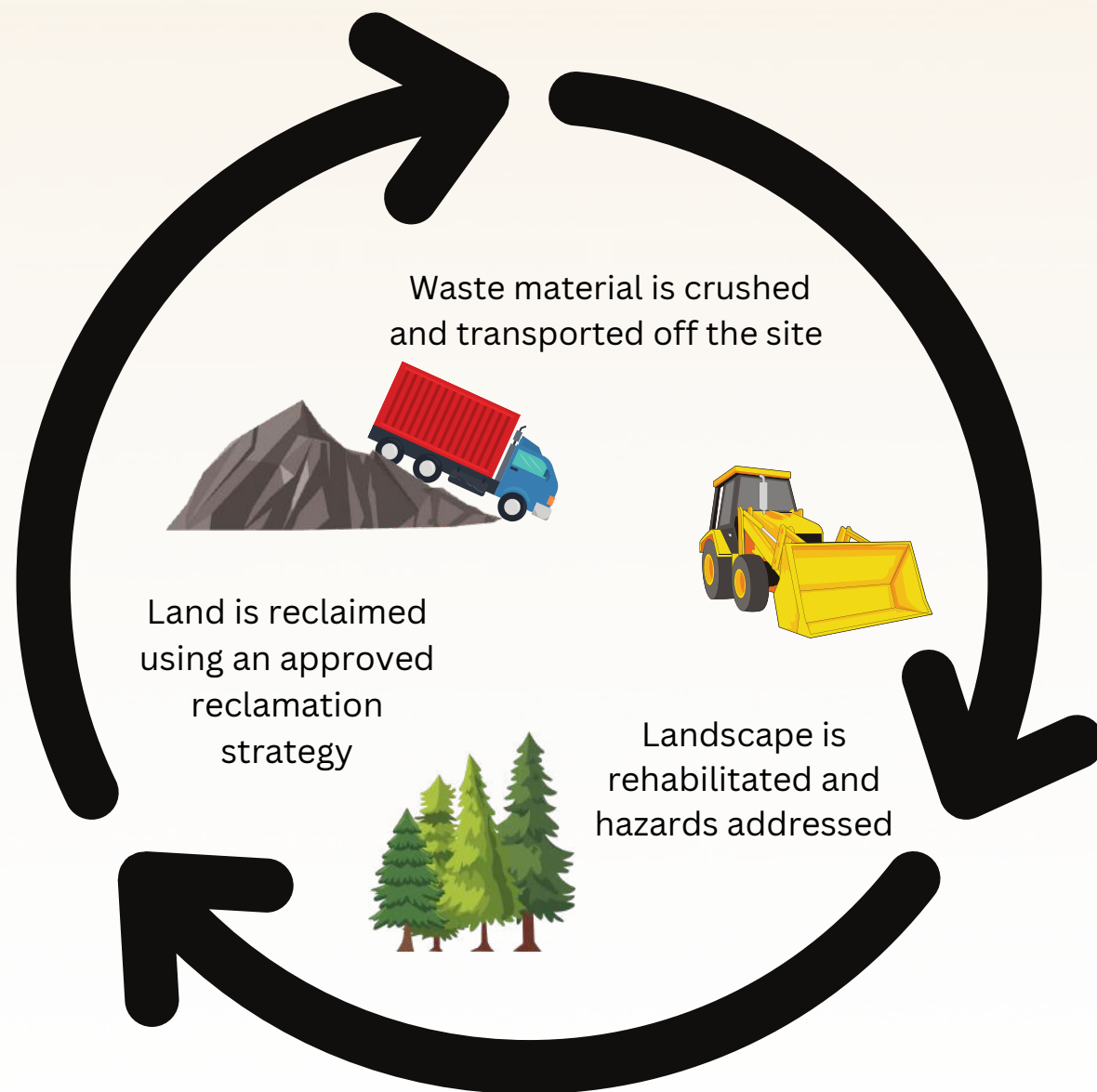
- To work with local governments and stakeholders to return the hazardous sites back to nature.
- This includes removing mineral-rich waste rock through a no-chemical, closed-loop ore sorting process which can remove over 95% of gold, copper, silver and zinc, but also mercury, arsenic, lead and sulphur.

Win – Win

- The waste rock has considerable value and the removal process is highly efficient, which should provide excellent margins.
- The reclamation of the historical mine sites will create jobs and address ongoing environmental hazards.



HIGHLY PROFITABLE AND REPEATABLE PLAN



Low Capital Intensity / Strong Potential Cash Flows

- Meaningful cash flow can be generated with limited upfront capital, with a portion potentially funded through grants, debt, or other non-dilutive sources.
- Projects in the pipeline each contain significant waste rock with high-grade metal content.
- Waste rock is accessible, piled at surface, and extraction costs are a fraction compared to traditional mining, supporting robust gross profit potential.

Quick Timeline to Cash Flow

- Rehabilitation of historical mines is a priority for local communities and stakeholders, which should help with permitting and ultimately benefits everyone.
- Once permitted, high grade material (first ~ 10kt) could be delivered to port in just weeks.

Pathway is Repeatable

- Sasquatch has already advanced multiple projects in its pipeline, with Mount Sicker serving as the lead.
- Early engagement with local stakeholders and First Nations, including MOUs, is intended to serve as a repeatable template for permitting success.
- Mobile ore sorting and offtake solutions can be redeployed across projects, enabling efficient, sequential execution.
- There are 800 legacy minesites in BC alone.

PROJECT PIPELINE

Mt. Sicker (Vancouver Island, BC)

- Waste with gold, silver, copper and zinc.
- High grades.
- Ore sorting and acid testing done.
- Permitting process started.



Copper Road (Near Mt. Sicker)

- Logging road cut through copper.
- Grid sampling complete.
- Easy access, simple end product.
- Potential new discovery.



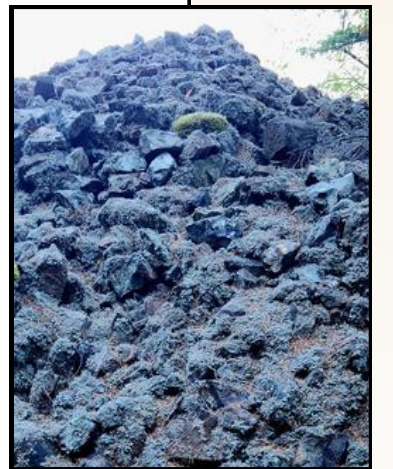
Blue Grouse (35km from Mt. Sicker)

- Waste with copper and silver.
- 500m off a paved highway.
- Grid sampling complete.



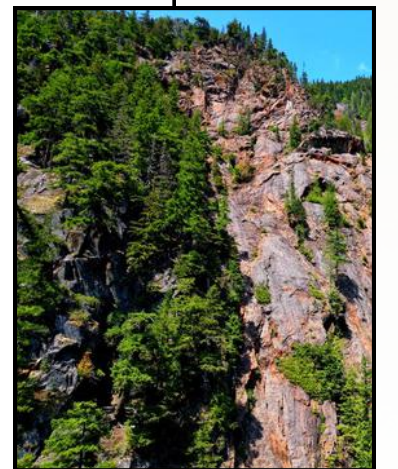
Santana (Quadra Island, BC)

- Waste with gold, silver and copper.
- Grid sampling complete.
- Potential new discovery.



Slesse (South of Sardis, BC)

- High grade gold, copper and silver.
- Adjacent to 30-year gold operation in USA.
- Waste ore sorting methods can be used to extract value on a small-scale.



MOUNT SICKER

Waste Rock

- Over 300,000* tons of waste rock may be sitting at the old mining sites on Mount Sicker.
- Previous operations on Mount Sicker include Lenora, Richard III, Tyee, Victoria and Twin J mines (1895-1945) - this work has left behind massive amounts of waste rock.

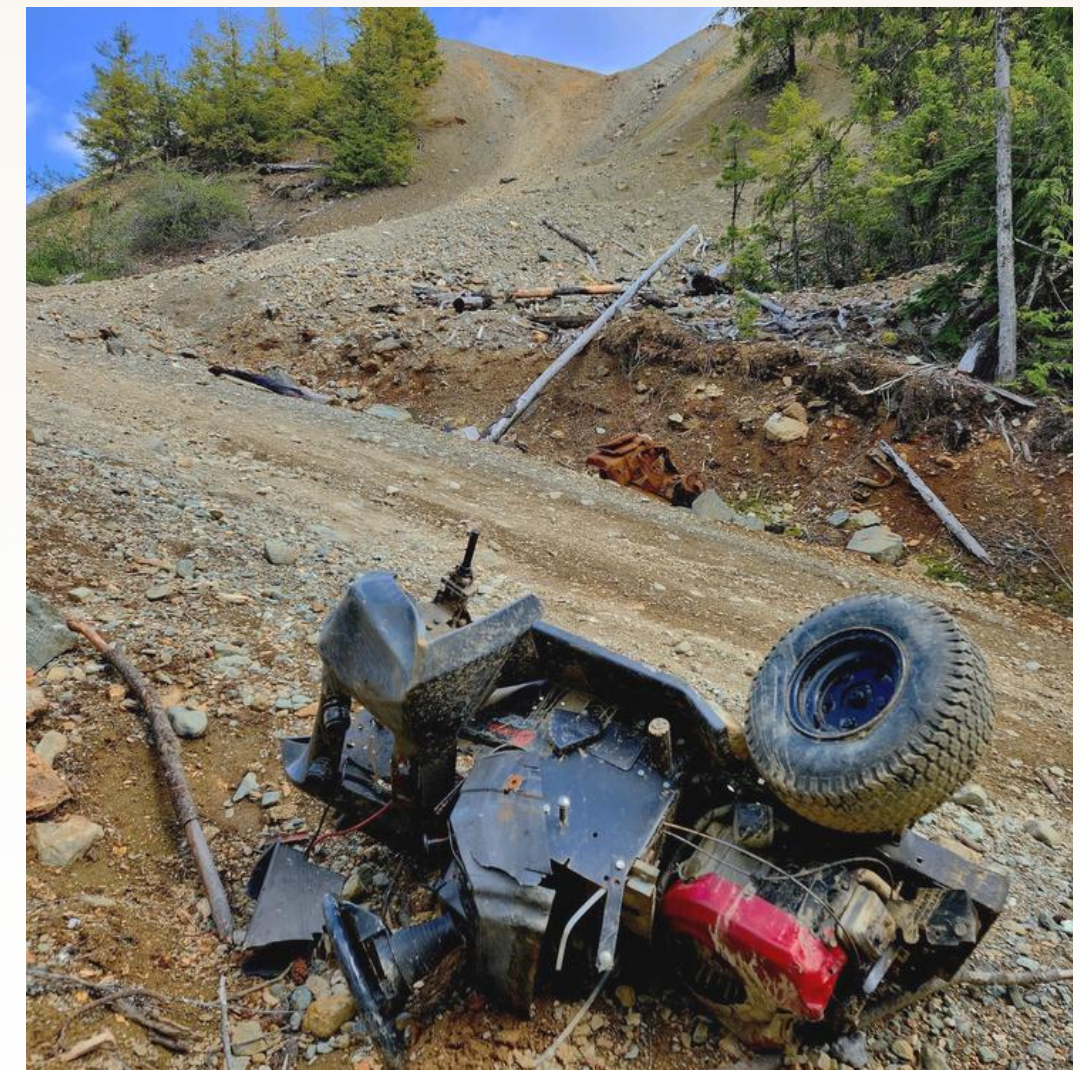




MOUNT SICKER

Waste Rock

- Waste rock areas on Mount Sicker allow for little or no new growth (over the past 100 years) and have become a magnet for local refuse dumping.



MOUNT SICKER

Waste Rock

- Valuable elements have been left behind in waste rock (historical cut-off of 8% copper) - a closed-loop, no-chemical process can separate out high-grade material and leave behind only environmentally safe rock.



MOUNT SICKER

Waste Rock

- There would be a professionally designed and approved reclamation/closure strategy, restoring the site and addressing a number of existing hazards.



MOUNT SICKER - RENDERING ILLUSTRATIONS

Lenora

BEFORE



AFTER

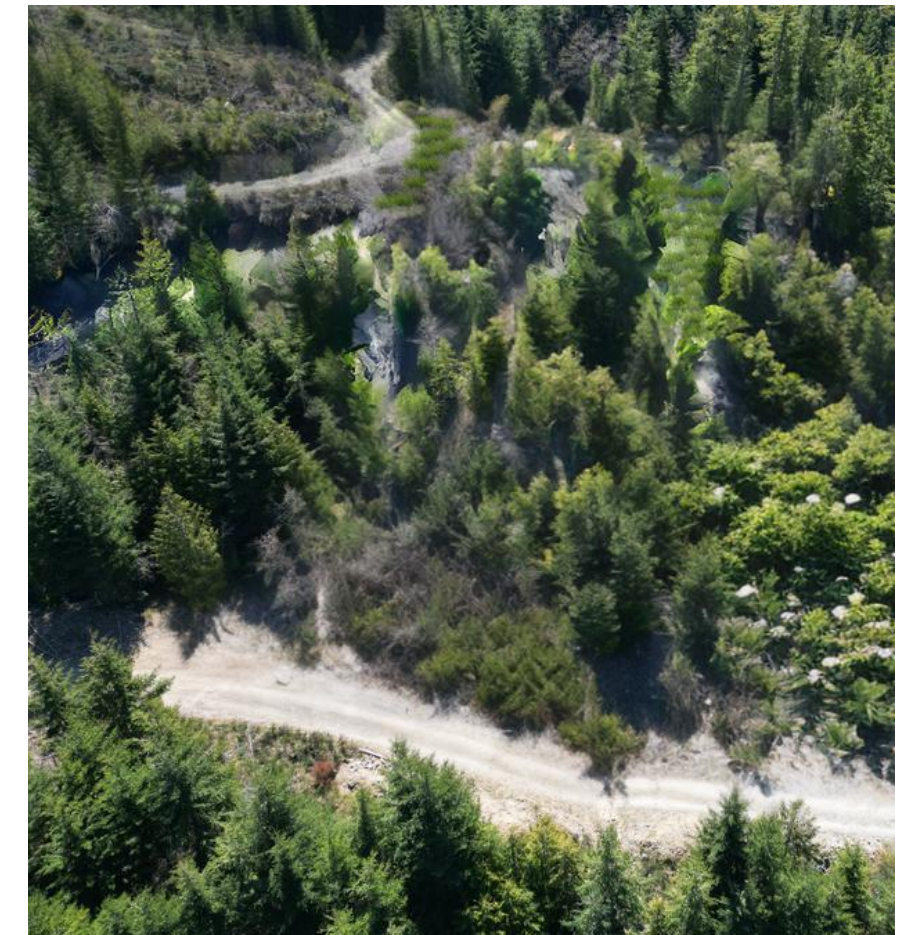


Tyee

BEFORE

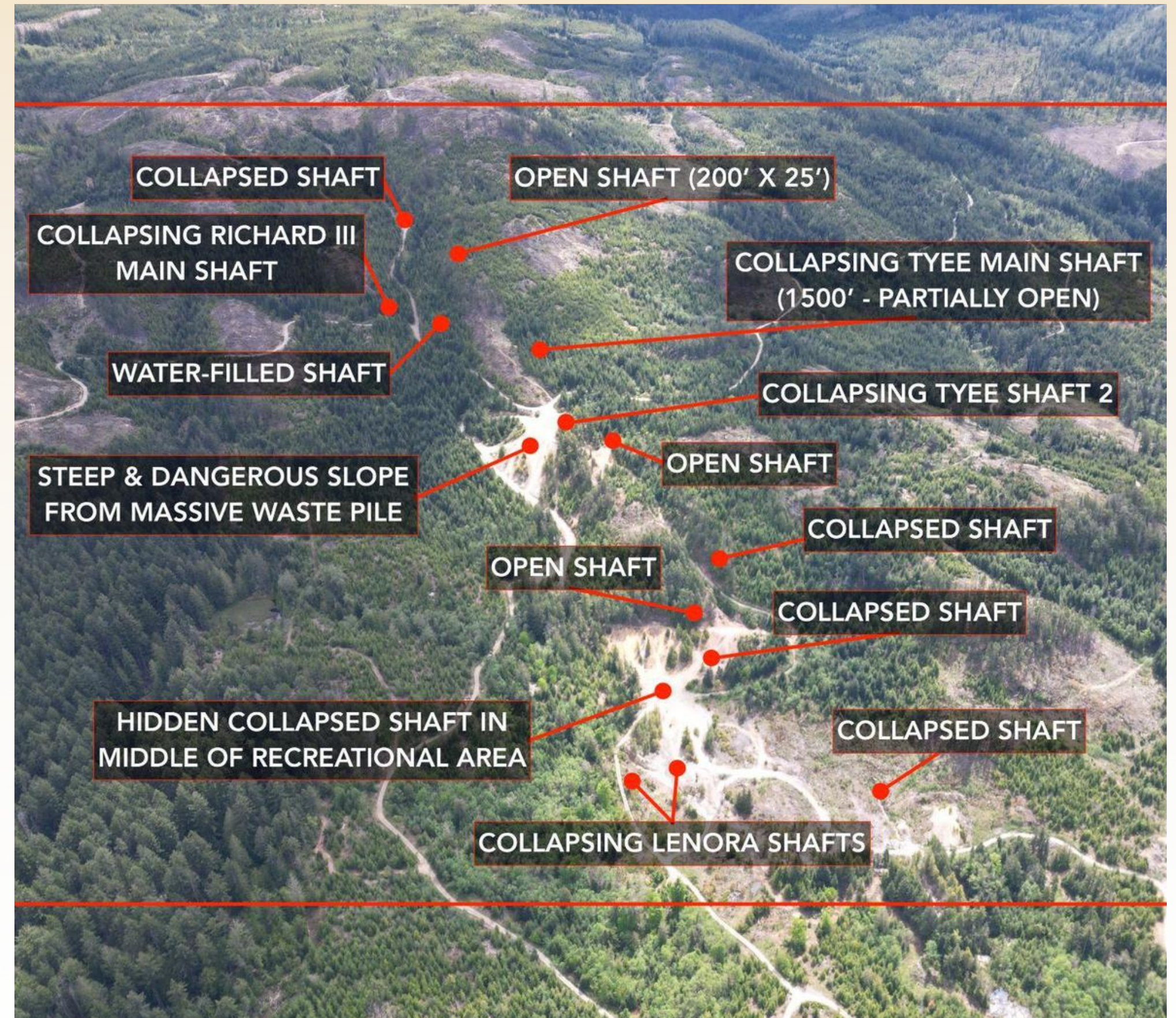


AFTER



Dangers & Hazards

- Historic mining operations have left behind environmental hazards of all kinds.
- The area is used extensively by locals and tourists for mountain biking, dirt biking, hiking, and other recreational activities.
- As a part of any reclamation plan, hazards would be addressed.



MOUNT SICKER

Hazard Close-Ups

- Open shaft hidden by trees, 25ft across and over 200 ft deep.
- Acid generating waste piles.
- Open adits all over the area - some to be sealed with special screens.*
- Collapsed potholes in open areas of recreational use.



*For example, in the event that adits are discovered to now be local bat habitat, there are special screens that will allow bats continued access while blocking human access.



MOUNT SICKER WORK COMPLETED

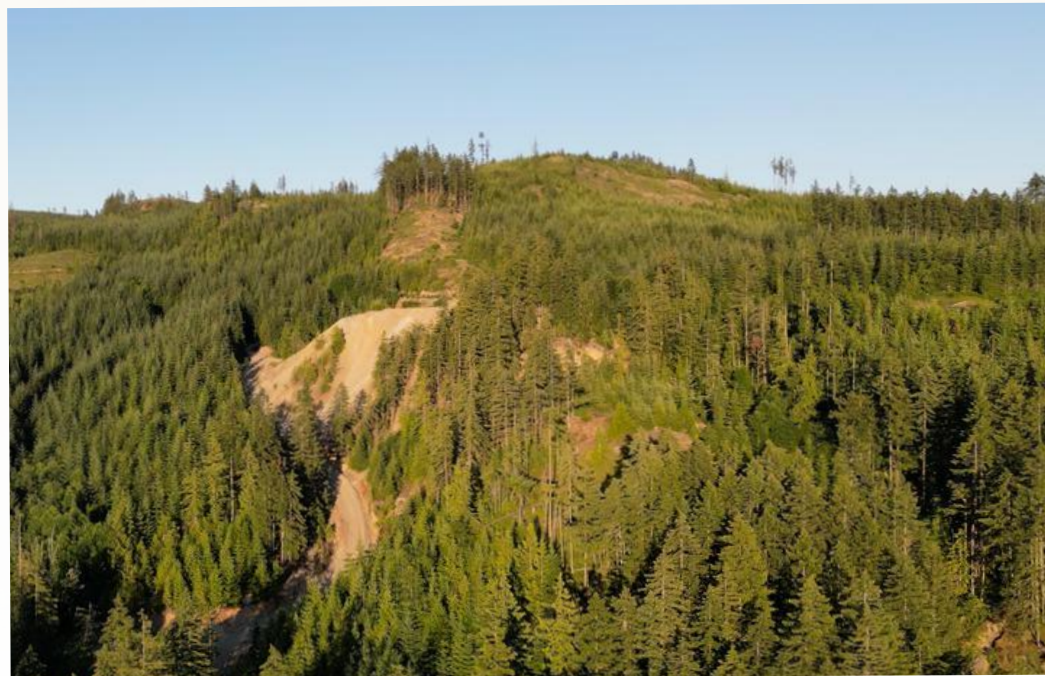
See Press Releases dated:

[March 27, 2024](#)

[October 9, 2024](#)

[May 27, 2025](#)

[December 31, 2025](#)



Grid Sampling

- **97 grid-pattern surface samples** returned average grades of: **1.86 g/t Au, 48.6 g/t Ag, 1.22% Cu, and 3.05% Zn**, across an estimated **250–350 kt of waste rock**.*

Grades May Improve With Depth

- **30 hand/auger samples**, excavated to depths of **2–3 metres**, returned materially higher grades, averaging: **3.95 g/t Au, 79.17 g/t Ag, 3.25% Cu, and 5.72% Zn**, indicating potential vertical grade improvement within the waste rock pile.*

Surface Mineralization Among Waste

- **An exposed outcrop within the waste rock pile** was sampled with **5 continuous channel samples**, returning an average of: **5.6 g/t Au, 122 g/t Ag, 6.25% Cu, and 7.7% Zn**, highlighting the presence of locally **high-grade sulphide material**.*

Ore Sort Testing

- A 528kg ore-sorting test produced high-grade material averaging **6.43 g/t gold, 180 g/t silver, 4.92% copper and 8.7% zinc**, with a projected **30–40% mass pull** from waste, potentially yielding about **100,000 tonnes of high-grade material**.*

Acid Testing on Waste vs. Sorted Material

- Acid testing on our 528kg sorted sample showed that the ore sorting process transformed **acid generating waste** into benign rock. Raw waste rock was acid generating but once sorted, rejected material was **non-acid generating**.*

*Potential quantities and grades are conceptual in nature. There has not been sufficient exploration to define a mineral resource, and it is uncertain if further exploration will result in the target being delineated as a mineral resource.

MOUNT SICKER

Processing Plan

- The waste will be crushed and sorted on site using a mobile system.
- High-grade waste and fines will be transported off-site to an advanced processing facility .
- Once permitted, operations could be completed within 1-2 years of starting.

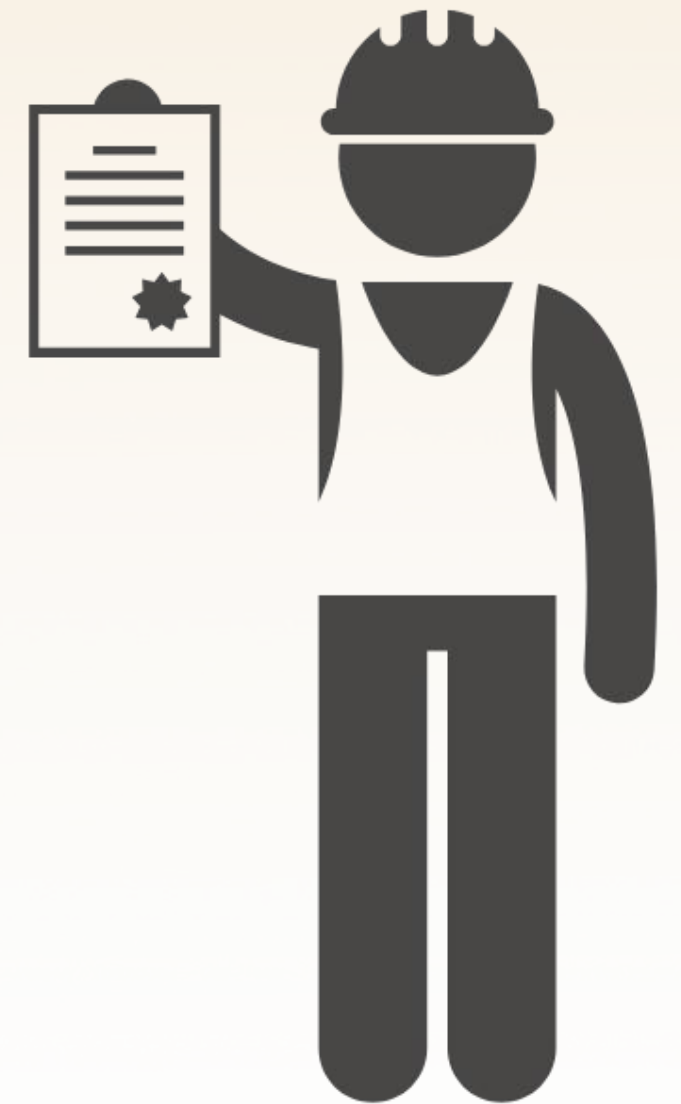




MOUNT SICKER

Permitting Process

- Permitting process is underway.
- The Province/community has a vested interest in addressing the waste and hazards.
- Sasquatch has submitted detailed surveys, processing plans, and a reclamation/closure strategy, all from qualified professionals.
- The site is currently a waste dump, with environmental and potentially life-threatening physical hazards.
- The goal is to remove the high-sulphides, address the hazards, improve water runoff quality, and make the site safe for recreational use.
- Community, local government and First Nations have expressed support.



MOUNT SICKER

Why we think this approach could be “the model” going forward:

- **Previous attempts to address waste-rock at old mining sites generally suggest small-scale processing on-site, which has issues:**
 - Requires MORE mining infrastructure, including new tailings ponds, which increases the mess.
 - Takes many years before ANY reclamation can be done.
 - Creates new environmental risks.
- **Sorting and shipping of high-grade has the following big advantages:**
 - All done using mobile infrastructure, with no "new" mess - uses an existing off-site facility for advanced processing.
 - Can be completed within months so reclamation can begin almost right away.
 - Removes harmful contaminants with the valuable minerals, improving the water/soil quality and allowing new growth.

MOUNT SICKER

Carbon Footprint & Environmental Benefits

- No faster or more environmentally friendly way to get critical minerals into the supply chain.
- Copper, silver and zinc may be used to support clean-tech technology (EV's, solar, batteries, etc.).
- No new mine, no new processing facility required.
- All this while addressing ongoing environmental hazards.
 - Future point - **Carbon footprint comparison? Discovering and extracting a pound of copper the traditional way vs. reclaiming.**

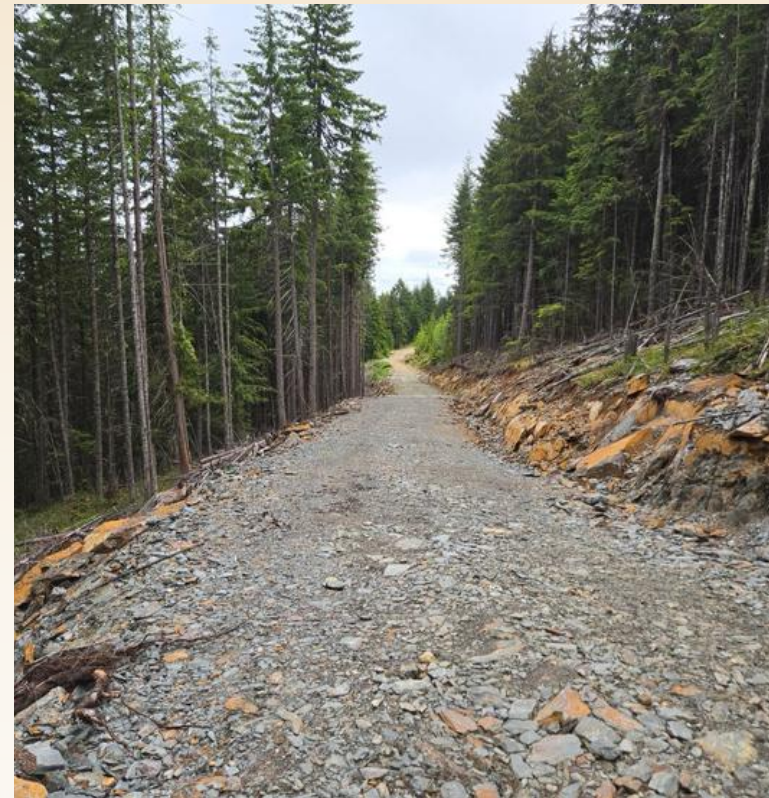




NEXT PROJECTS

Copper Road

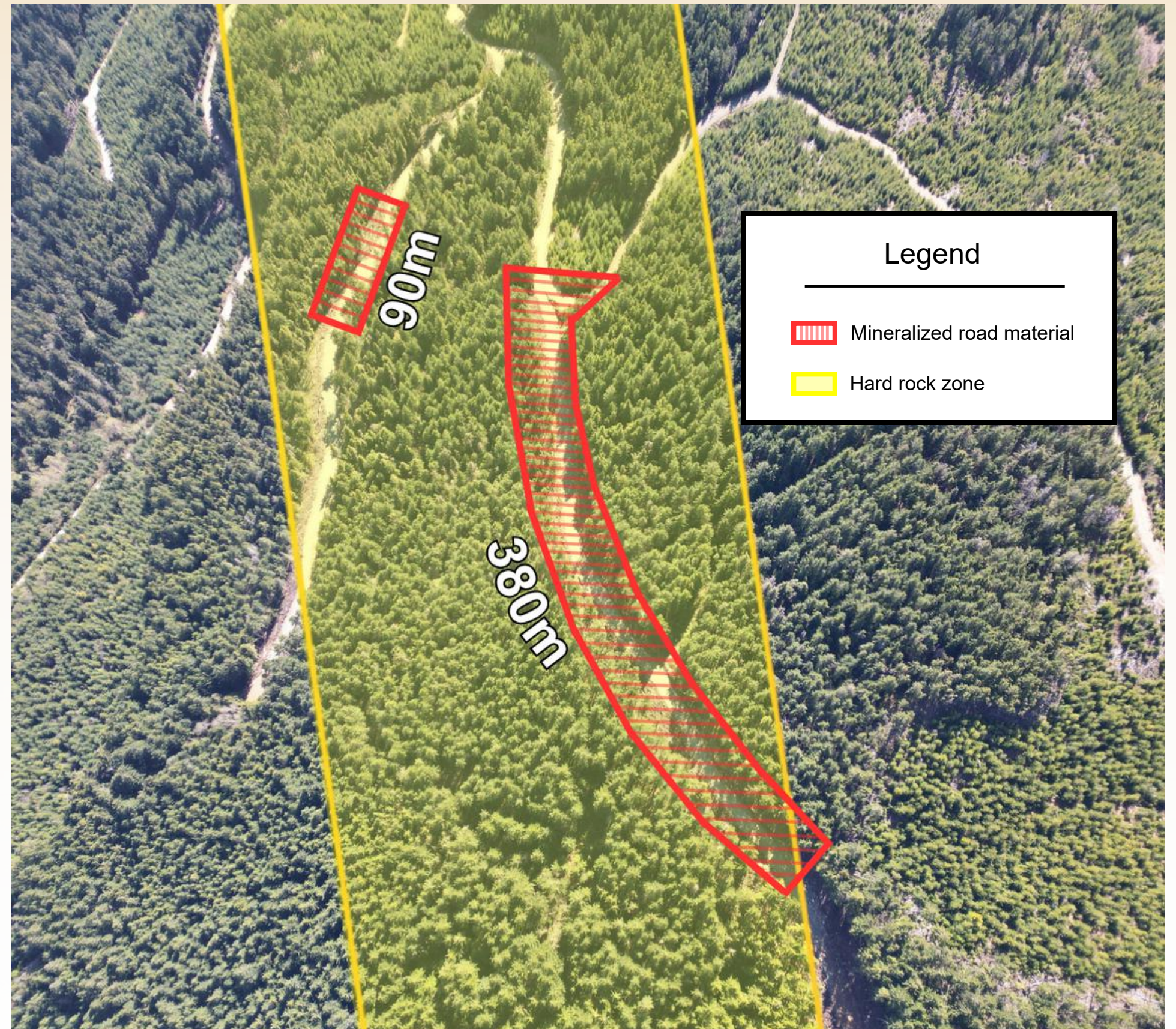
- Recently discovered from logging activity just 2-3km from the original Mount Sicker site.
- New road cuts directly through a mineralized system.
- Material used to build the road can be removed using the same sorting process.
- The overall volume is significant, and removing the sulphides will be good for the environment.
- See [October 14](#) and [December 31](#), 2025, press releases.



NEXT PROJECTS

Copper Road (Hard Rock)

- The VMS system exposed by logging activity at Copper Road has also led to a potential new hard rock discovery.
- Mineralized rock at surface has been observed throughout the area, and also corresponds with the mountain's largest geophysical anomaly.
- A permit for trenching and bulk sampling has been obtained and Sasquatch is conducting further exploration.

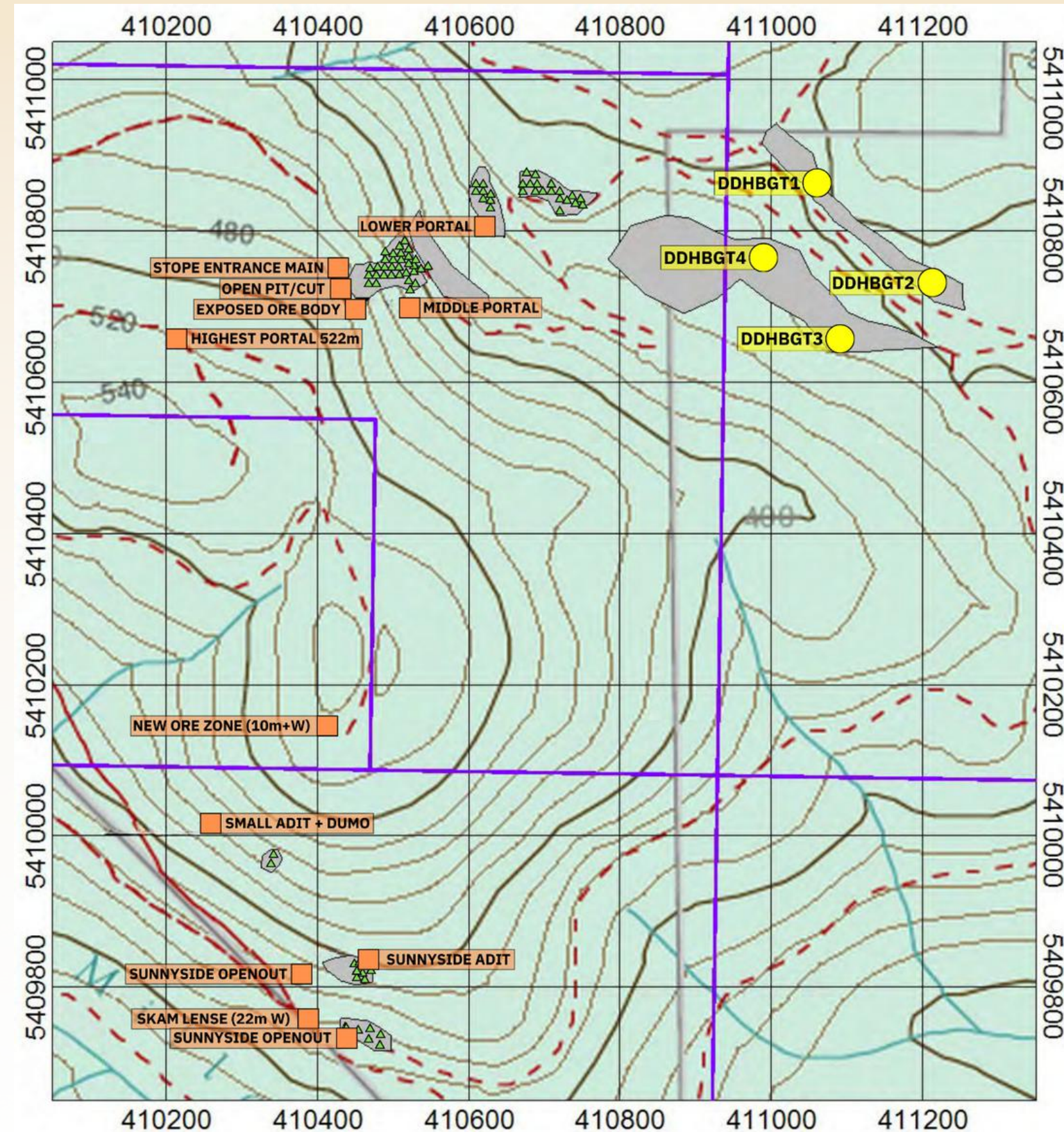




NEXT PROJECTS

Blue Grouse

- Sasquatch has surface rights to another, nearby project similar to Mount Sicker.
- Historical mining at Blue Grouse has left behind large volumes of high-copper waste, as well as a number of physical hazards - very near Lake Cowichan (a recreational hub).
- A sampling program was completed across the waste area - reported in [November 7, 2024](#) press release.



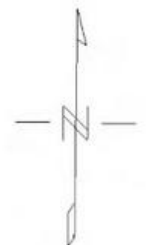
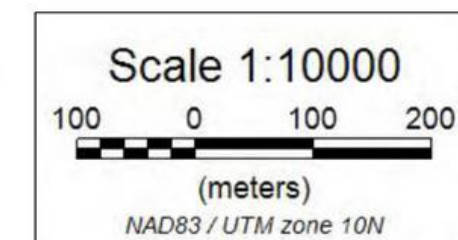
Sasquatch Resources Corp.

Blue Grouse Project
Infrastructure and 2024 Sampling Locations

Jacques Houle P.Eng.

LEGEND

- TAILINGS SAMPLE HOLES
- POINTS OF INTEREST
- ▲ WASTE SAMPLE BAG LOCATIONS



NEXT PROJECTS

Santana

- The Santana mining area is located on Quadra Island, about 2 hours drive north of Mount Sicker.
- Mining occurred in and around 1915, with a number of high-sulphide waste piles and other hazards left behind.
- High copper, silver and gold remain in the waste and copper mineralization is evident in very large surface outcrops (pictured).
- Some technical details can be found in our [April 1, 2025](#) press release.

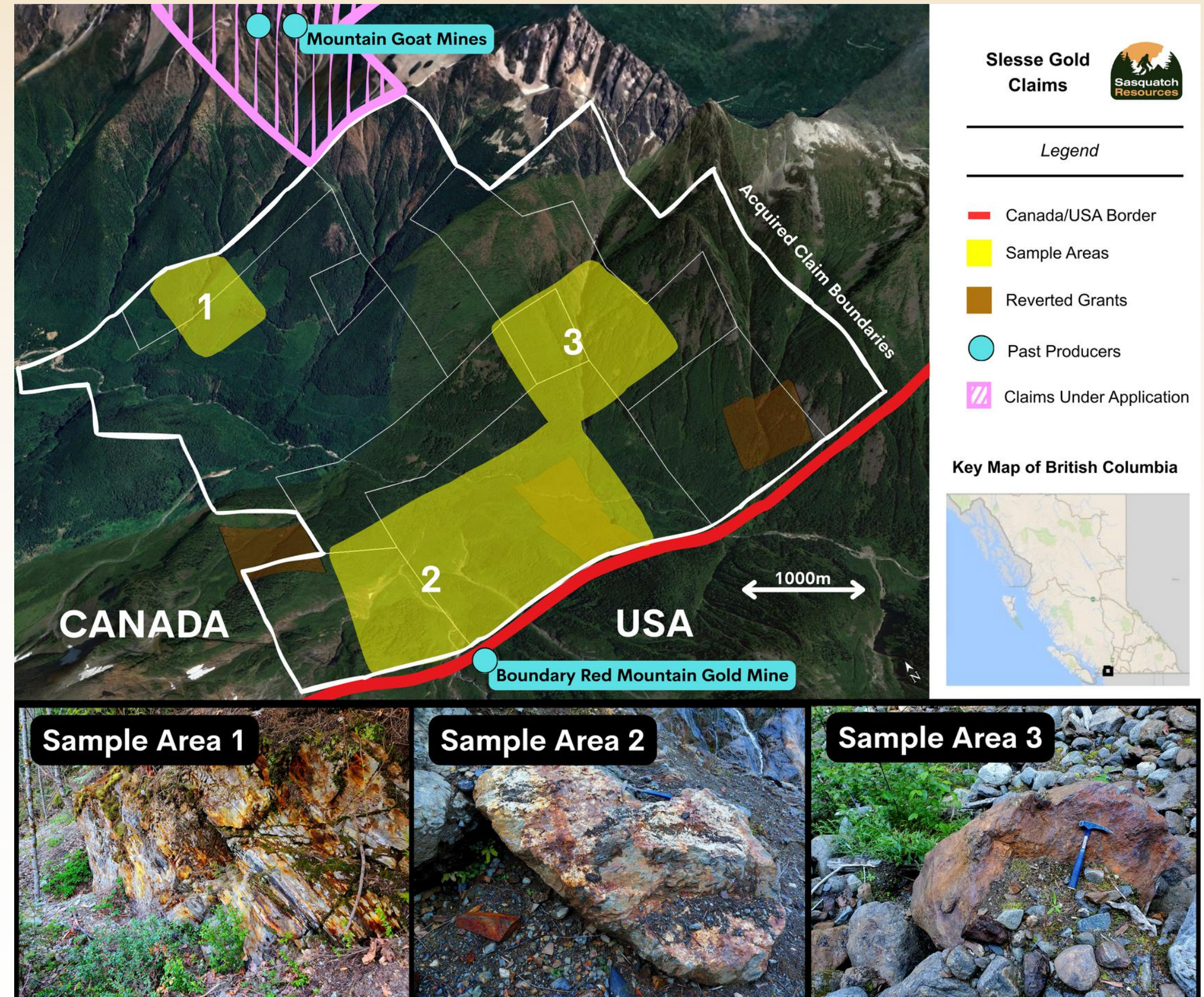




NEXT PROJECTS

Slesse

- 11 mineral claims covering 1,567 hectares south of Sardis, BC, near the USA border. Three more claims to the north are currently under application.
- These claims are within 150m of the historic Red Mountain Gold Mine (just across the USA border) and encompass the historic Mountain Goat Gold Mines.
- Sampling on the Canadian side returned gold up to 700 g/t and significant silver and copper, full results in press release dated [January 13, 2026](#).





A MOUNTAIN OF OPPORTUNITY

The Mount Sicker Reclamation Project (and our other projects) are expected to:

- Provide jobs.
- Clean up significant environmental hazards.
- Result in the recovery of gold, silver, copper and/or zinc.
- Address a number of potentially life-threatening hazards.
- Represent a rare 'win-win' environmentally and economically.
- Serve as an example of how to deal with waste sites nationwide.

For more information, please visit sasquatchresources.com



**Thank you for helping
us restore Mount
Sicker, Blue Grouse,
Santana, Slesse and
other future projects to
pristine condition!**

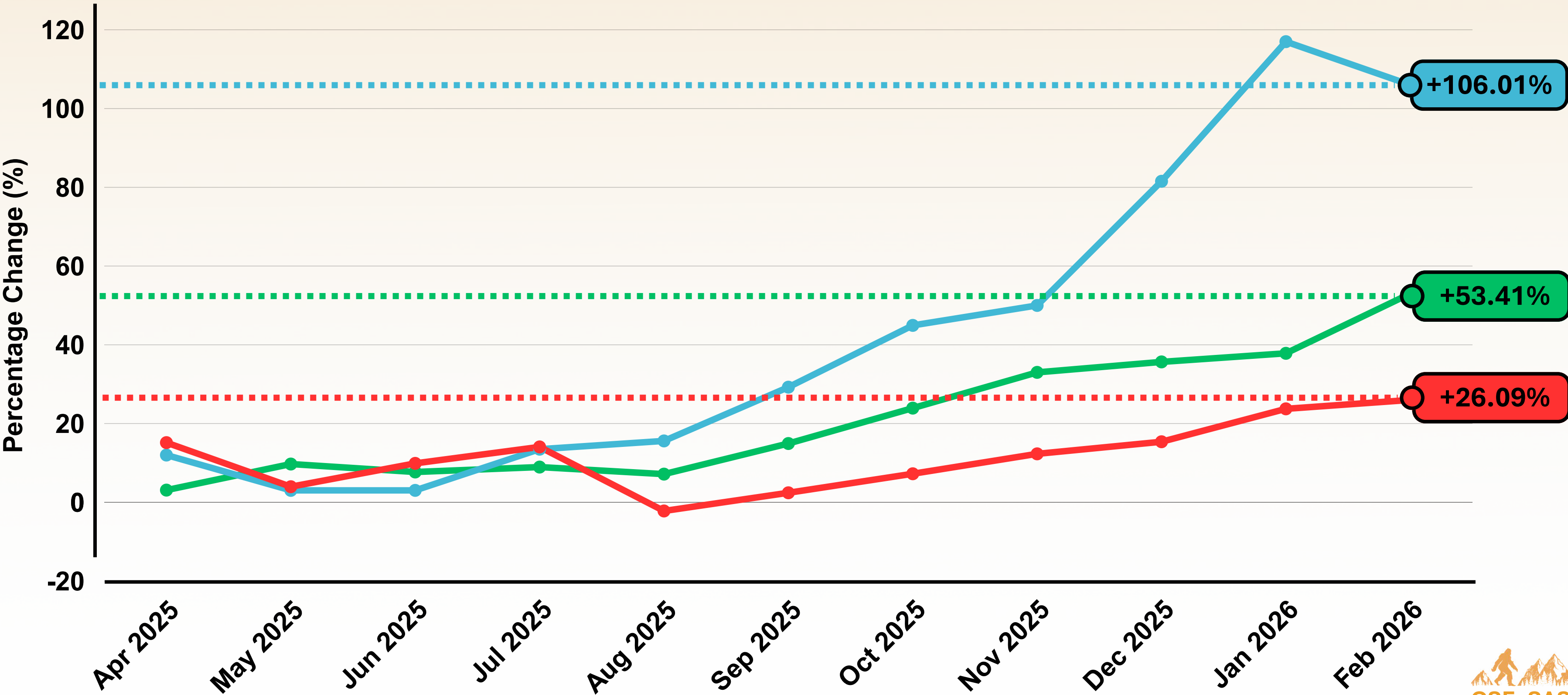
Investor Presentation | January 2026
sasquatchresources.com





Gold, Silver, Copper Trends Apr 2025 - Feb 2026

● Gold ● Silver ● Copper





BOARD OF DIRECTORS & MANAGEMENT

Peter Smith



CEO

Mr. Peter Smith was educated at SFU, UBC, and Cambridge University (Trinity Hall College). He is also a former clerk at the Supreme Court of Canada and lawyer at Debevoise & Plimpton (New York). In 2013, Mr. Smith co-founded Less Mess Storage, a storage business based in Central and Eastern Europe, and which now has multiple storage centers throughout Poland and the Czech Republic, and an estimated value of over \$500 million CAD. He also co-founded Myriad Uranium in 2019, a CSE mineral exploration company that has grown to over \$50m in value. Mr. Smith spent over ten years teaching criminal law and criminology at Simon Fraser University.

Nelson Lamb



CFO

Mr. Lamb is the President and CEO of Redhaven Consulting Inc., a boutique firm specializing in CFO services and financial reporting for public companies. Mr. Lamb has served as Chief Financial Officer and director of several listed companies on the TSX-V and CSE. As a founder and executive, Mr. Lamb has played a key role in a variety of significant successful public equity raises, go-public transactions and public offerings to accelerate growth. Mr. Lamb earned a Bachelor of Commerce degree from the University of Victoria and a CPA designation while articling for PricewaterhouseCoopers.

Justin Deveault



VP

Mr. Justin Deveault has been a prospector since 2008, staking and acquiring mineral claims throughout British Columbia. In 2011 he started 911 Mining Co., which began as a prospecting and mineral claims acquisition company, and now also conducts mineral exploration on behalf of third-party clients. Mr. Deveault is a resident of Duncan, living less than 30 minutes drive away from Sasquatch's claims, and is extremely familiar with Mt. Sicker, having assembled many of the claims there over many years.

Mike Raven



CORPORATE SECRETARY

Mr. Michael Raven is a Vancouver-based lawyer practicing principally in the areas of corporate and securities law. Since leaving one of Canada's largest and most respected law firms in 2005, he has provided business and legal advice to private and public companies and other clients in industries such as mining, oil and gas, entertainment, and technology, with respect to corporate structures, initial public offerings, mergers and acquisitions, corporate governance, and private and public financings. He obtained his law degree from the University of Victoria in 1999, after which he clerked at the Supreme Court of British Columbia.



BOARD OF DIRECTORS & MANAGEMENT

Thomas Lamb



DIRECTOR

Mr. Thomas Lamb (no relation to Nelson Lamb) was a founder, director, and officer of M2 Cobalt Corp. until June 2019 when it sold to Jervois Global Limited. He continued to work for Jervois Global as an executive until February 2021. He was a founder of Goldgroup Mining Limited. He served on the board of one of Russia's largest gold producers, the Uzhuralzoloto Group. Mr. Lamb is currently director and CEO of private mineral explorers J2 Metals Inc., and Rift Copper Inc., as well as CEO of Myriad Uranium Corp (CSE: M). He holds an MSc from London Business School, and also JD and BA degrees. He was a corporate lawyer in Vancouver early in his career.

Andy Holloway



DIRECTOR

Andy Holloway is a mining industry professional with over 35 years of diverse industry experience. A metallurgical process engineer by training, his background includes the management of consulting businesses and plant operations, process consulting, plant design, capital & operating cost estimation, cashflow modelling, project management, procurement and commissioning – on an international scale and with a focus on base and precious metals. Andy currently serves on the Board of the Halyard/Micon Group (~70 employees) and works as a mining industry consultant from the Toronto office.

Jillian Doucette



ADVISOR

Jill founded Synergy Enterprises in 2008 after completing her biology studies. Passionate about how business, industry, and communities can mobilize towards a low-carbon future, she works on the frontier of several sectors, including community development, tourism, and clean technology. An active writer and speaker with three published books, Jill is also the Executive Director of the Synergy Foundation.

Lou Webster



DIRECTOR

Lou has been a lawyer in British Columbia for over 25 years and he has a broad and eclectic range of contacts in both the profession and the community. Lou has been involved in the junior mining sector for approximately 8 years. He is the President and CEO of Marster Metals Incorporated, a private exploration company with claims in New Brunswick, Quebec, Newfoundland, and Ontario, and is a special advisor to other private companies.